

## Chapitre 19

### Exercice 1, page 163

<b>D</b> G6	<b>A7</b> D	<b>Bmi</b> G	<b>A7</b> D	<b>D7</b> Emi	<b>F#7</b> Bmi	<b>G</b> D A7	<b>D</b>
I IV	V I	VI IV	V I	VII I	V I	IV I V	I
D			Emi		Bmi		D
<b>A7</b>	<b>Dmi</b>	<b>Dmi</b>	<b>Dmi</b>	<b>A7</b>	<b>A7</b>	<b>A7</b>	<b>A7</b>
V	I			V			
Dmi							
<b>Dmi</b> A7	<b>Dmi</b>	<b>Dmi</b>	<b>Dmi</b>	<b>A7</b>	<b>A7</b>	<b>A7</b>	<b>A7</b>
I V	I			V			
Dmi							
<b>Dmi</b> D7	<b>Gmi</b> C7	<b>F</b>	<b>Gmi6</b> A7	<b>Dmi</b>	<b>Dmi</b>	<b>Gmi</b>	<b>A7</b>
I V	II V	I	IV V	I		IV	V
Dmi	Gmi	F		Dmi			
<b>Dmi</b>	<b>Dmi</b>	<b>Gmi</b>	<b>Dmi</b> A7	<b>D</b> Bmi7	<b>Emi7</b> A7	<b>D</b> Bmi7	<b>Emi7</b> A7
I		IV	I V	I VI	II V	I VI	II V
Dmi				D			

### Exercice 2, page 164

<b>Cmi</b>	<b>Dmi7<sup>(b5)</sup></b> G7 <sup>(#9)</sup>	<b>Cmi</b>	<b>Dmi7<sup>(b5)</sup></b> G7 <sup>(#9)</sup>	<b>Cmi</b>	<b>Dmi7<sup>(b5)</sup></b> G7 <sup>(#9)</sup>	<b>Cmi</b>	<b>Fmi7</b> B7
I	II V	I	II V	I	II V	I	II V
Cmi							E <sup>b</sup>
<b>E<sup>b</sup></b>	<b>E<sup>b</sup></b>	<b>C7<sup>(#9)</sup></b>	<b>C7<sup>(#9)</sup></b>	<b>Fmi</b>	<b>F#°7</b>	<b>Dmi7<sup>(b5)</sup></b>	<b>G7<sup>(#9)</sup></b>
I		V		I	V	II	V
E <sup>b</sup>		Fmi		Gmi		Cmi	

<b>C mi</b>	<b>D mi 7<sup>(b5)</sup></b> <b>G 7<sup>(#9)</sup></b>	<b>C mi</b>	<b>D mi 7<sup>(b5)</sup></b> <b>G 7<sup>(#9)</sup></b>	<b>C mi</b>	<b>D mi 7<sup>(b5)</sup></b> <b>G 7<sup>(#9)</sup></b>	<b>C mi</b>	<b>C mi</b>
I	II V	I	II V	I	II V	I	
C mi							

## Chapitre 20

### Exercice 1, page 169

La majeur



Ré bémol majeur



Mi bémol majeur



### Exercice 2, page 169

Si majeur



La bémol majeur



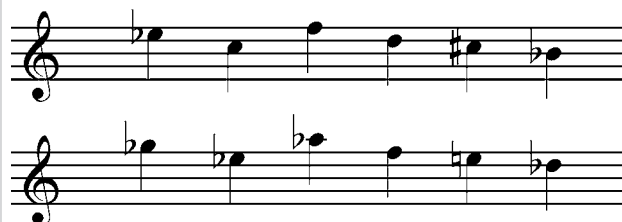
Mi majeur



### Exercice 3, page 169



### Exercice 4, page 169



### Exercice 5, page 169

Mi mineur



Fa mineur



Ré mineur



### Exercice 6, page 169

Do dièse mineur



Sol mineur



Sol dièse mineur



## Chapitre 21

### Exercice 1, page 178

Four staves of music in treble clef. The first two staves show a sequence of notes: G4, A4, B4, C#5, D5, E5, F#5, G5. The last two staves show a sequence of notes: G4, A4, B4, C#5, D5, E5, F#5, G5.

### Exercice 2, page 178

Tonalité: Ré majeur. Mode: mixolydien.

A complex musical score in D major, Mixolydian mode. It consists of a melody line with fingerings (5, 7 min, 6, 5, 4, 5, 4, 7 min, 4, 7 min, 4, 5) and a piano accompaniment with chords and bass lines.

## Chapitre 22

### Exercice 1, page 185

Four staves of music in treble clef. The first two staves show a sequence of notes: G4, A4, B4, C5, D5, E5, F#5, G5. The last two staves show a sequence of notes: G4, A4, B4, C5, D5, E5, F#5, G5.

**Exercice 2, page 185**

**Exercice 3, page 186**

Tonalité: Mi mineur. Gamme harmonique mineure.

**Chapitre 23**

**Exercice 1, page 192**

B7	Ema7
parfaite	

B7	C#mi7
rompue	

Ama7	Ema7
plagale	

**Exercice 2, page 192**

B <sup>b</sup> mi7	A <sup>b</sup> ma7
E <sup>b</sup> 7	
II V I	

Fmi7	E <sup>b</sup> 7
B <sup>b</sup> mi7	A <sup>b</sup> ma7
anatole	